

Our slimmest cistern

**Sigma concealed cistern 75 mm
for wall-hung toilets**

**Know-how
from
Switzerland**

Geberit inwall cisterns hit all the right buttons

Easy to install, tough and virtually maintenance free

Geberit has the most extensive product range of inwall cisterns on the market and now introduces our slimmest cistern ever produced. A Duofix cistern frame slim enough to fit between 500 mm studs in a cavity of 75 mm.

We all know that inwall sanitary technology is the way of the future. For the trade, it can't come soon enough as inwall cisterns save time, require less tools during installation and are virtually service free. For your clients, an inwall cistern means a sleek, contemporary bathroom with more space. The toilet system consists of a frame that integrates the cistern into the wall, a pan and a beautifully designed plate for flush actuation.

Geberit has developed the widest range of 4 star WELS rated inwall cisterns available in Australia. With a dual-flush system of 4.5/3L or 6/3L, this reduces water volume considerably with every flush. With significant investment in research and development, Geberit ensures that the manufacturing process of all products comply with the highest standards in environmental protection.

You can match a Geberit inwall cistern with any approved manufacturer's pan. Just match the WELS Star rating of the pan and cistern for accurate operation.

Since 1964, Geberit inwall cisterns have stood for quality and reliability. They are easy to install, with a 10 year limited warranty on cistern tank and Duofix installation frame and 25 year spare parts supply guarantee (exclusions apply).*



Art. No.: 111.755.00.1 WELS **☆☆☆**

Duofix for wall-hung WC with Sigma concealed cistern 75 mm front actuation, 6/3L



Art. No.: 111.756.00.1 WELS **☆☆☆☆**

Duofix for wall-hung WC with Sigma concealed cistern 75 mm front actuation, 4.5/3L

* For detailed information on our manufacturer's warranty refer to our website, www.geberit.com.au or contact Geberit on +61 2 9889 7866

For the trade, 10 advantages of Geberit inwall cisterns

The inwall cistern you'd install in your own home



1. Easy and quick to install.

Geberit's experience ensures products are reliable and the best in the category. They are quick and easy to install. All necessary materials and parts are included. Just follow the diagrammatic installation manual.



2. Know-how from Switzerland.

High quality material ensures Geberit is virtually maintenance free. Geberit is the original manufacturer of inwall cisterns since 1964.



3. Most extensive product range on the market.

With our comprehensive product range, nearly every bathroom can benefit from a Geberit inwall cistern and a beautifully crafted flush plate.



4. Excellent customer support to both trade and retail.

Geberit's team of sales and support professionals are eager to assist with all your installation and maintenance questions.



5. Extremely slim design.

Geberit cisterns can fit between studs, even in walls with a 75 mm cavity. Swiss know how and technology has delivered our slimmest inwall cistern ever produced. It may be thin, but includes insulation against condensation and other distinguishing features. The Duofix element for a wall hung pan is capable of supporting 400 kg.



6. Cisterns can be easily serviced through the flush/access plate.

The beautifully designed flush plates, of varying finishes, provide easy access to the moving parts. To make it even easier, we have produced a series of service and installation videos which you can download from our website, geberit.com.au.



7. Flexibility.

Geberit Duofix element can be paired with any WELS approved wall hung toilet pan on the market. Just match the WELS star rating of the cistern and pan.



8. A one piece blow moulded tank for a secure water tight seal.

Geberit is Swiss, so of course you can feel confident in our seamless state of the art manufacturing process. Each tank is pressure tested for absolute water tightness before assembly, we guarantee it.



9. Peace of mind.

Geberit offers a 10 year limited warranty on cistern tank and Duofix installation frame and 25 year spare parts supply guarantee (exclusions apply).*



10. Water saving dual-flush system.

Pre-adjusted 4.5/3L or 6/3L to match any toilet pan of the same flush volume.



Servicing is easy via flush/access plate.



All moving parts can be removed through opening.



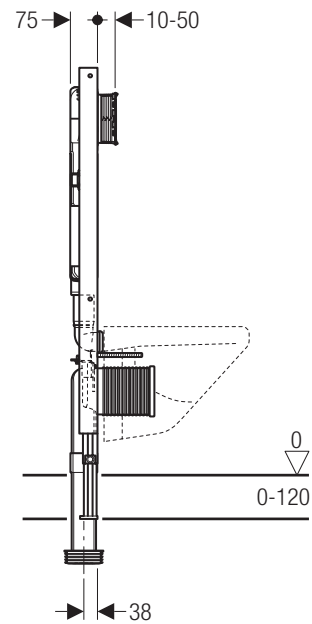
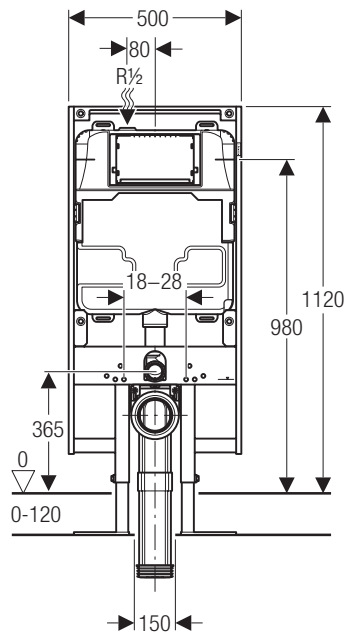
Oval waste connection bend to fit into 75 mm wall.



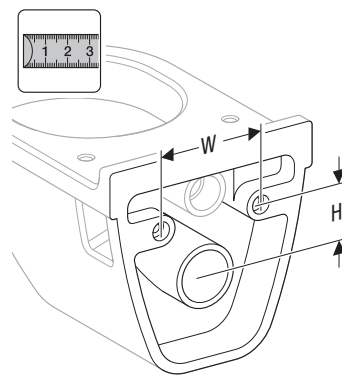
Insulation against condensation.

Installation & specifications

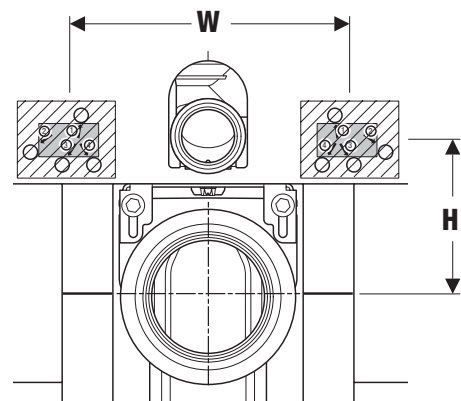
Wall-hung WC installation



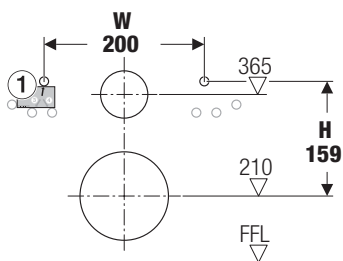
Important Note: The Duofix with Sigma cistern 75 frame is designed to be used with different toilet models. Verify dimension with ceramic supplier for correct adjustment of height, bolts and pan connections.



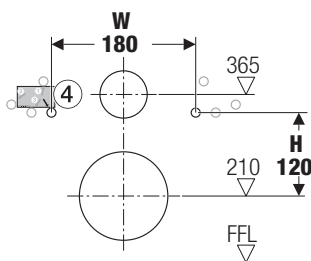
W = _____ mm
H = _____ mm



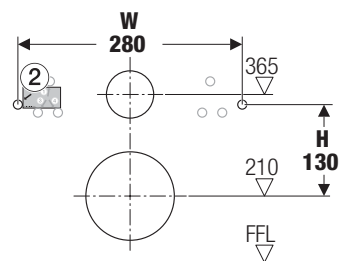
Caroma Walvit



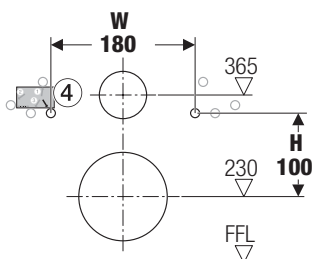
Caroma Cube / Fowler Seido



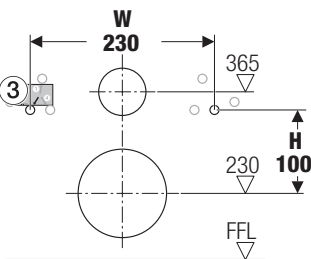
Fowler Lucid



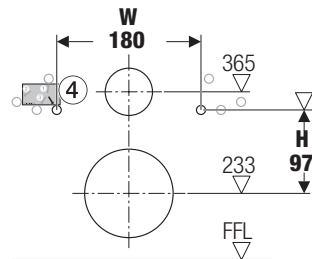
EN-Standard



EN-Standard



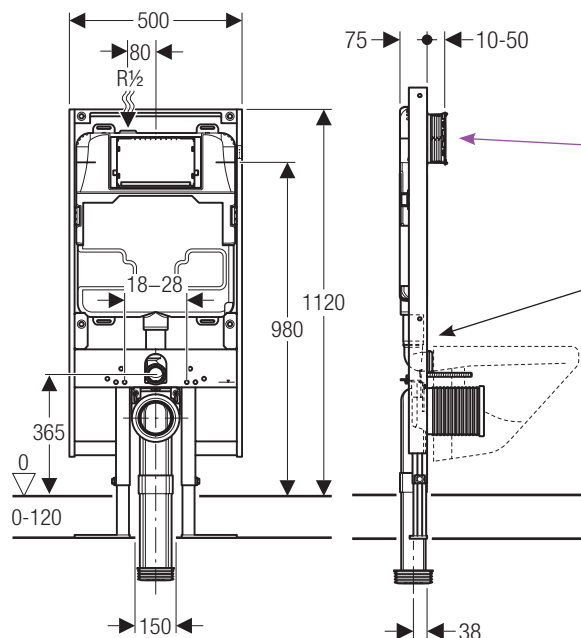
Caroma Metro



Stud wall installation

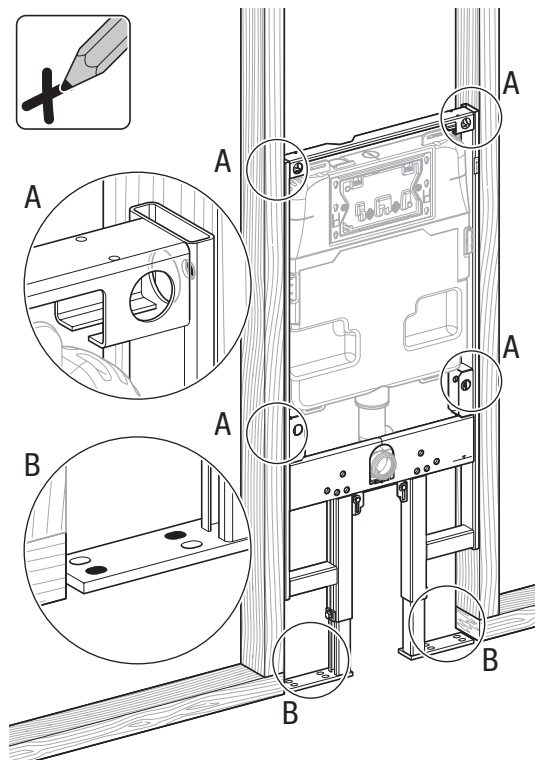
For additional information see installation instructions.

The frame must **to** be flush with the front of the studs.
Fastening through the frame into the studs with the appropriate bolts.



For Sigma60 compatibility see Sigma60 installation instructions.

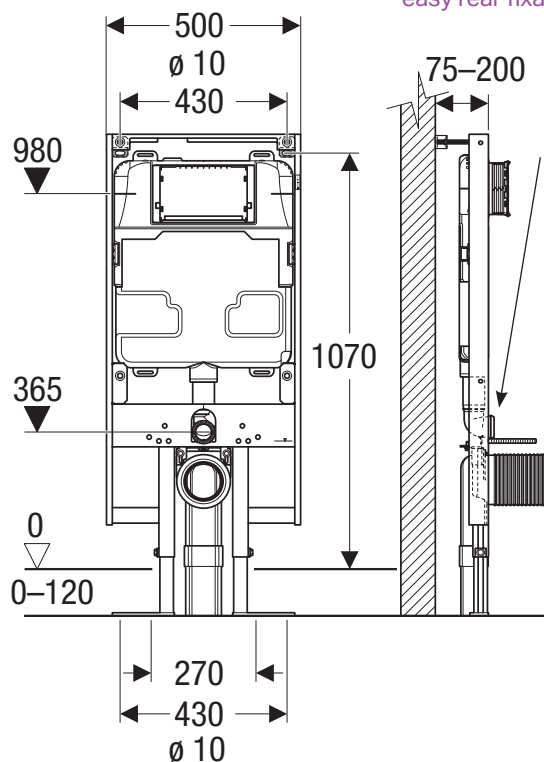
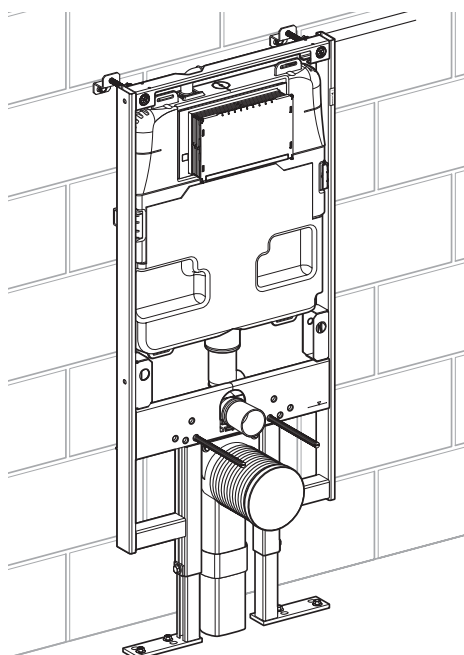
Foam layer to avoid pressure points from uneven surfaces. It also doubles as sound insulation. See accessories Art. No. 170.317.00.1



Pre-wall installation onto solid wall

For additional information see installation instructions.

Three types of wall brackets for easy rear fixation (see accessories).



Foam layer to avoid pressure points from uneven surfaces. It also doubles as sound insulation. See accessories Art. No. 170.317.00.1

Flush/access plates

The flush/access plate acts as the actuator and provides the access required for the servicing the internal parts of the cistern



Sigma60



Sigma50



Sigma20



Bolero

Sigma60

115.794.GH.1 Sigma60 dual-flush plate metal, brushed chrome, non protruding

Sigma50

115.788.SD.5 Sigma50, dual-flush plate metal, finish smoked reflective glass

115.788.11.5 Sigma50, dual-flush plate metal, finish white

115.788.DW.5 Sigma50, dual-flush plate metal, finish black

115.788.SE.5 Sigma50, dual-flush plate metal, finish green satin

Sigma20

115.778.KJ.1 Sigma20 dual-flush plate – white/bright chrome/white

115.778.KL.1 Sigma20 dual-flush plate – white/satin chrome/satin chrome

115.778.KH.1 Sigma20 dual-flush plate – bright chrome/satin chrome/bright chrome

115.778.KN.1 Sigma20 dual-flush plate – satin chrome/bright chrome/satin chrome

115.778.KK.1 Sigma20 dual-flush plate – white/gold/white

115.778.KM.1 Sigma20 dual-flush plate – black/bright chrome/black

115.778.SN.1 Sigma20 dual-flush plate – stainless steel

115.781.SN.1 Sigma20 dual-flush plate – stainless steel, with vandalproof screws

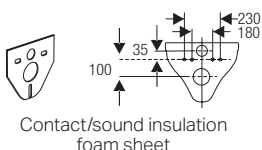
Bolero

115.777.11.1 Bolero dual-flush plate – ASA white

115.777.21.1 Bolero dual-flush plate – ABS bright chrome

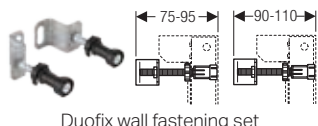
115.777.46.1 Bolero dual-flush plate – ABS satin chrome

Accessories



Contact/sound insulation foam sheet

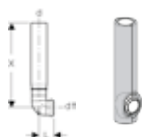
170.317.00.1 Contact/sound insulation foam sheet for wall-hung WC



Duofix wall fastening set

225.167.00.1 Duofix wall fastening set 75-95 mm

242.048.00.1 Duofix wall fastening set 90-110 mm

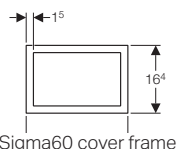


241.294.00.1 Flush bend for brick wall installation



Adjustable frame fastening set

111.815.00.1 Adjustable frame fastening set



Sigma60 cover frame

242.544.GH.1 Sigma60 cover frame

Our slimmest inwall cistern



**Know-how
from
Switzerland**

Inwall cisterns save time, require less tools during installation and can be easily serviced. For your clients, they deliver a sleek, contemporary bathroom with more space. Our new Sigma cistern, at just 75 mm, is the thinnest. Since 1964, Geberit inwall cisterns have stood for quality and reliability. They are easy to install, have a 10 year limited warranty on cistern tank and frame, and a 25 year spare parts supply guarantee and include our water saving dual-flush system. Compatible with any approved manufacturer's pan. Just match the WELS Star rating of the pan and cistern for accurate operation. Geberit is the inwall system you'd install in your own home. → [geberit.com.au](https://www.geberit.com.au)

Geberit Pacific Head Office
Unit 8a, 6-8 Byfield Street
Macquarie Park NSW 2113

T 1800 GEBERIT
F 02 9889 7855
sales.au@geberit.com

→ geberit.com.au

